



STYLEITALIANO PRODUCTS - SUGGESTIONS SMILE LITE MDP

6367 Views - Jan 2017

The most desired accessory for easy photography, MDP is a "mini studio" for intraoral dental photography with your cellphone. Smile Lite MDP is a plug and play device that is very easy to use and that doesn't need any special App, calibration process or specific education. It will allow you to drastically improve your results with the camera of your smartphone... very easily. It took 3 years of development and tests. The device is equipped with three groups of LEDs (light emitting diodes). Each group can be lit up individually, while you also have the possibility to set the power of illumination thanks to a dimmer (four different steps of power) giving you a wide range of possibilities.

The back of Smile Lite MDP is equipped with a universal adaptor that is adjustable for any model of smartphone having a width between 55-85mm, which covers the vast majority of the existent models.

Nowadays, each new smartphone arriving on the market is equipped with a more performing and amazing camera! Taking advantage of this revolution in progress that Smile Line and Styleitaliano proposes you the very first device specially studied for allowing the most beautiful dental photos with your smartphone: Smile Lite MDP – professional dental photography accessible for everyone!

Documentation in dentistry is becoming more and more popular since it is very important and sometimes mandatory.

Digital Single Lens Reflex (DSLR) are the professional cameras that was till today the best way to take high quality dental pictures. But the problem with these devices is the high cost of the body, the macro lens, the ring flash, the twin flashes, the diffusers, the polarizer and all the other accessories, that is why lot of dentists and especially the students can not afford easily to have a DSLR. Not to forget the complexity of using these kind of cameras and the learning curve required not only for the clinician/technician, but for the staff also.

With the evolution of mobile phones cameras, and since everybody is using them for everyday photography, it was described in Styleitaliano since 2014 (<http://www.styleitaliano.org/mobile-dental-photography-part-i> and <http://www.styleitaliano.org/the-future-of-dental-photography>) that we can have high quality pictures with mobile phones with the help of special lights. Since then the quality of the smartphone cameras is improving and the same for the dental pictures taken with mobile phones.

Today, everybody will be able to have great pictures using his smartphone with the introduction of a new device, designed by Prof. Louis Hardan, developed by Smile Line (Switzerland) and powered by the international group Styleitaliano. This new device is called Smile Lite MDP.

As you will see in this article, Smile Lite MDP is very easy to use with all the brands of smartphones from 55mm to 85mm.

In this device you have the equivalent of a ring flash, twin flashes, diffusers and a polarizer, and you can combine these different lights to take new kind of dental pictures. The use of this device is so easy, all you have to do is connect your smartphone to the device, turn on the light that you want, open the camera, be at 10 to 20 cm far from the teeth, Zoom, Focus and take the picture. To have a professional picture it is

advised to use retractors and contrastors (Flexipalette, Smile Line)

To know how to get this device please follow this link www.smileline-by-styleitaliano.com and the list of dealers in different countries in this link <http://smileline.ch/en/dealer>

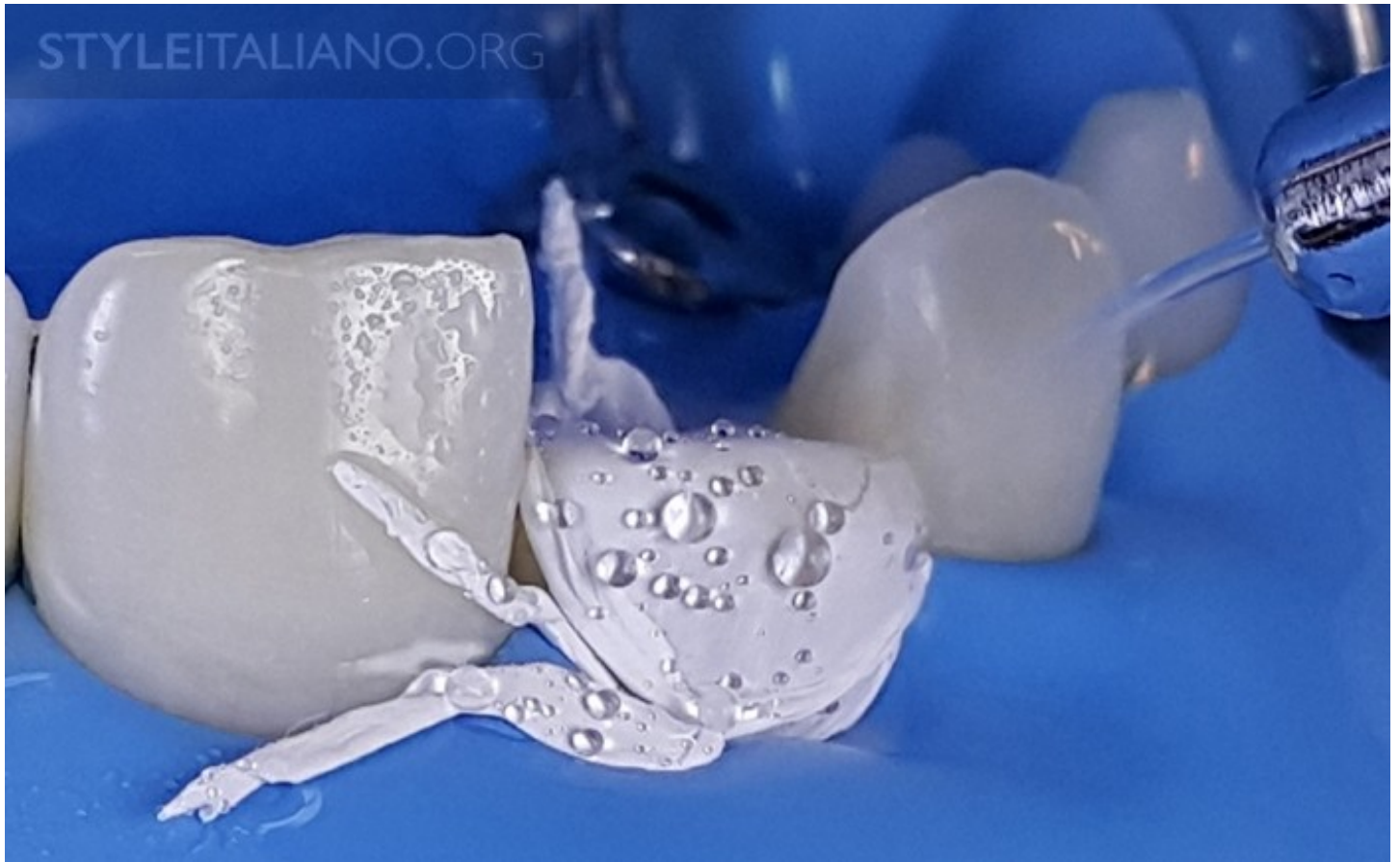


Fig 1: MDP stands for Mobile Dental Photography, and this is the kind of pictures that we can have using Smile Lite MDP. How can we use it to have different quality of pictures by modifying the light?



Fig 2: To start, we have to plug the phone in the connector.



Fig 3: Open the connector to be able to place the phone (all kind of phones between 55mm and 85mm can be used)

STYLEITALIANO.ORG



Fig 4: The connector will hold the phone firmly.



Fig 5: This is how the device is presented after the connection. the camera of the phone must be in the middle of the viewer.

STYLEITALIANO.ORG



Fig 6: To have a picture with the effect of a ring flash

STYLEITALIANO.ORG



Fig 7: Turn On the light, press the + button over the central light, for few seconds to have the maximum capacity of light. If the lateral flashes are On, you have to press on the - button as you see in the picture. Now you can take a picture with the central light On.



Fig 8: This is the kind of picture that you can have with the light reflecting in the middle of the teeth like the ring flash.

STYLEITALIANO.ORG



Fig 9: To have a picture with the effect of lateral twin flashes.

STYLEITALIANO.ORG



Fig 10: Turn On the light, press the + button over one of the lateral lights, for few seconds to have the maximum capacity of both lateral lights. If the central flash is On, you have to press on the - button as you see in the picture. Now you can take a picture with the lateral lights On.



Fig 11: This is the kind of picture that you can have with the lights coming from lateral sides like the effect of the twin flashes. We can see all the details present in the middle of the teeth.

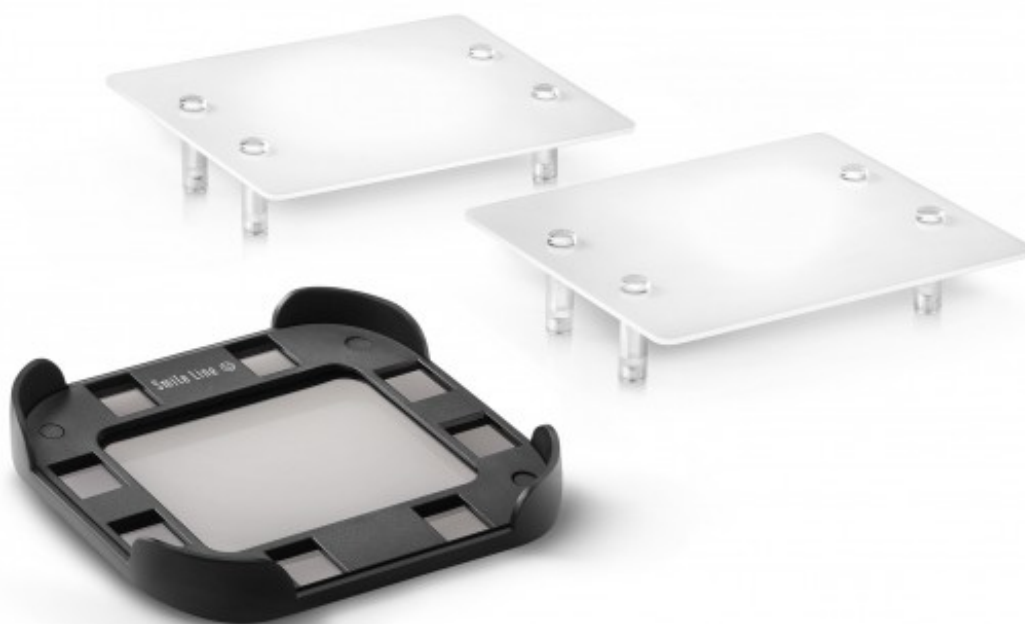


Fig12: To have a picture with the effect of lateral twin flashes with diffusers, you will use the white diffusers.

STYLEITALIANO.ORG



Fig 13: Those white diffusers are attached with a strong magnet to the device.



Fig 14: Lights On from the lateral lights with the diffusers in place.



Fig 15: Turn On the light, press the + button over one of the lateral lights, for few seconds to have the maximum capacity of both lateral lights. If the central flash is On, you have to press on the - button as you see in the picture. Now you can take a picture with the lateral lights On.



Fig 16: This is the kind of picture that you can have with the lights coming from lateral sides like the effect of the twin flashes with diffusers. We can see the effect of the diffused light on the teeth and the gum..

STYLEITALIANO.ORG



Fig 17: To have a polarized picture, we have to use the black polarized filter.

STYLEITALIANO.ORG



Fig 18: This black diffuser is attached with a strong magnet to the device.



Fig 19: Turn On the light, press the + button over the central light, for few seconds to have the maximum capacity of light. If the lateral flashes are On, you have to press on the - button as you see in the picture. Now you can take a polarized picture with the central light On.



Fig 20: A polarized picture where you can see all the details of the dentin, the beauty of the incisal halo and all the intensities in the teeth.

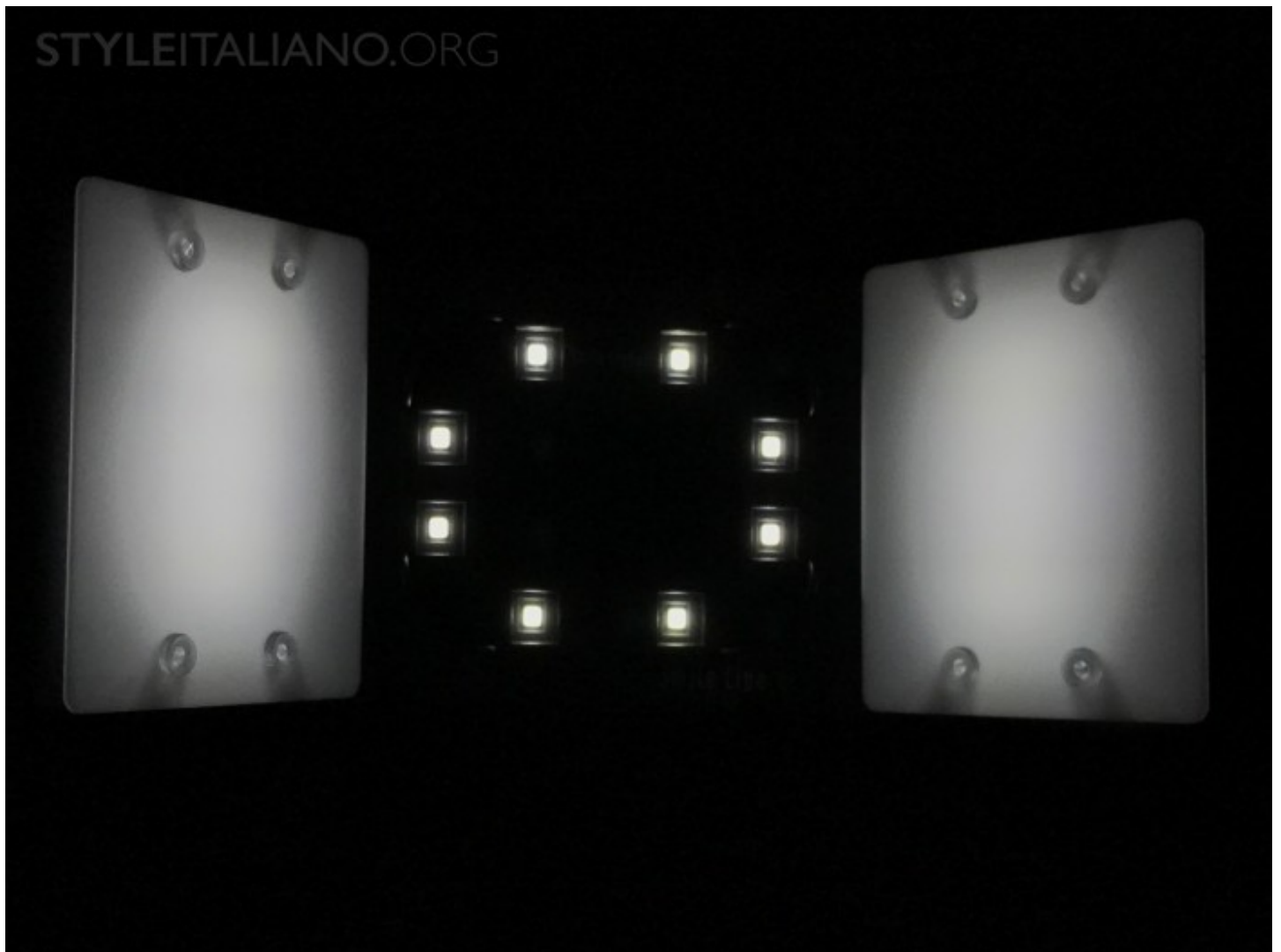


Fig 21: Another Special effect that you can have with Smile Lite MDP that is hard to do with other types of cameras, is the polarized picture with a small diffused light coming for the lateral sides. For this you have to turn all the lights and use the polarizer and the diffusers.



Fig 22: Polarized and diffused light used in this picture (Samsung Smartphone).



Fig 23: Polarized and diffused light used in this picture (iPhone Smartphone)



Fig 24: This is a comparison between pictures taken with iPhone 7 and DSLR camera

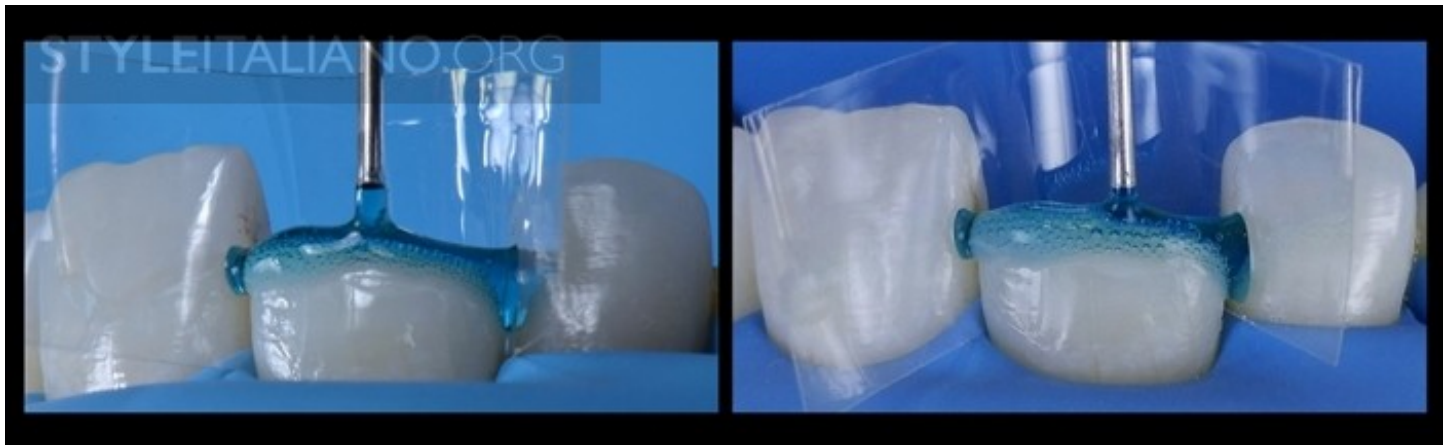


Fig 25: This is another comparison between pictures taken with Samsung smartphone and DSLR camera.

STYLEITALIANO.ORG



Fig 26: For posteriors, you have to turn the central light On at maximum power without any filter.

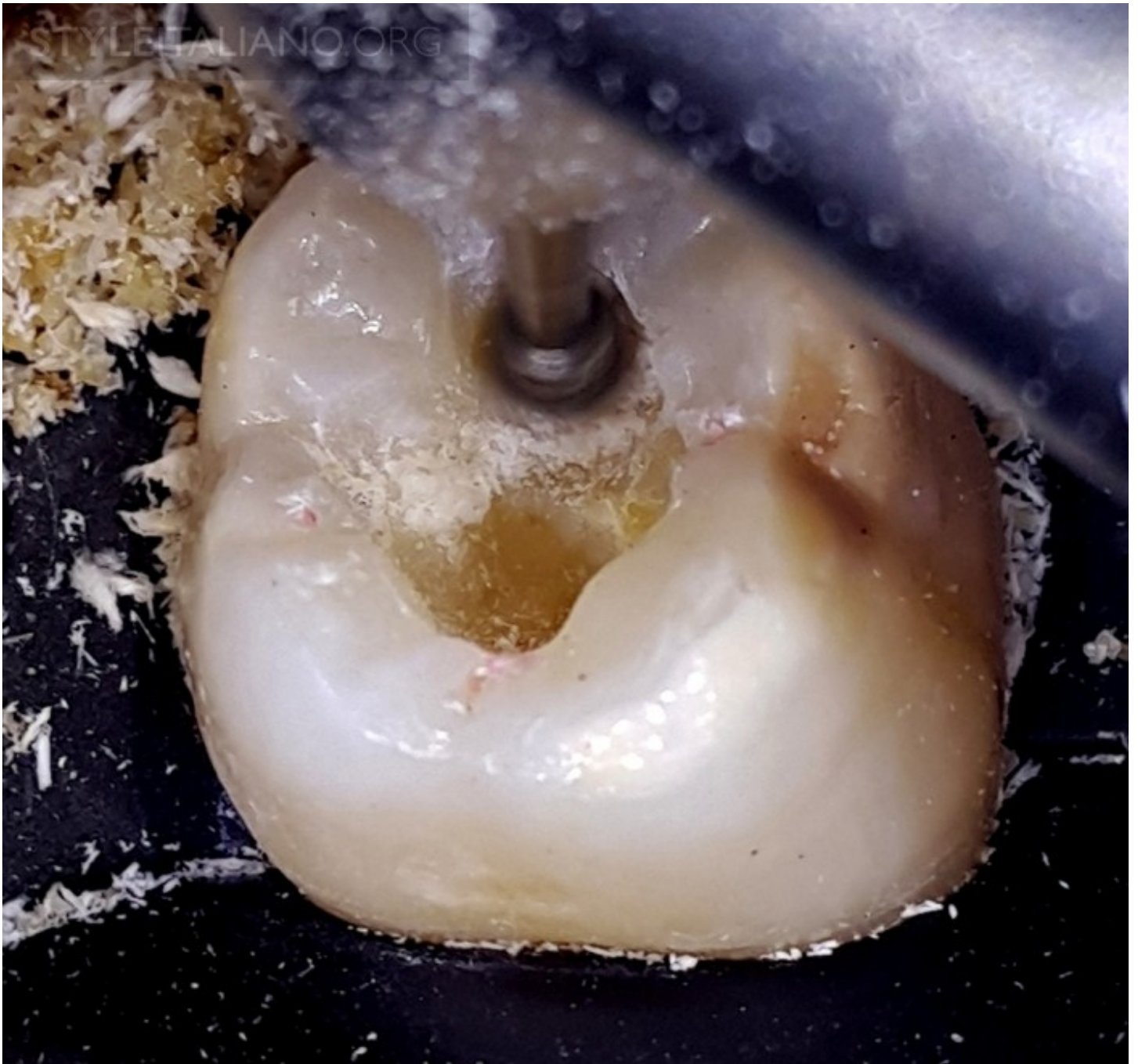


Fig 27: Posterior picture taken with a Smartphone and Smile Lite MDP.



Fig 28: MDP is an excellent tool to document easily your Smile Design projects

Mobile Dental Photography is an alternative for the dentists who can not afford or know how to use the DSLR cameras, and this to have high quality pictures for their dental documentation.

To know how to get this device please follow this link www.smileline-by-styleitaliano.com and the list of dealers in different countries in this link

<http://smileline.ch/en/dealer>

Visit: <http://www.styleitaliano.org/smile-lite-mdp>