



AFRA TEB AVA

MEDICAL EQUIPMENTS



T-GEN

Absorbable Collagen Membrane **HYUNDAI**
BIOLAND

// Advantage of the Profile

Better Stability

- Excellent tear resistance
- Prolonged barrier function and duration

Better Tissue Integration

- Excellent assistance for fast blood supply to the defect
- Lower incidence of soft tissue dehiscence

Better Handling

- No need of distinction, either side can be placed against the defect
- Fast hydration and excellent tensile strength
- Good adaptation to various defects

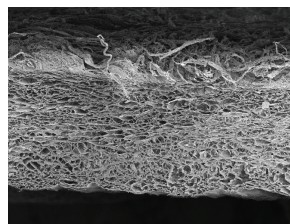
// Product Comparison (T-Gen Versus B product)

Better Stability

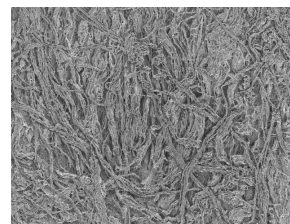
T-Gen functions as a barrier to provide the prolonged space maintenance with the long resorption period. T-Gen is biodegradable and absorbed within 24 weeks after implantation.

Better Tissue Integration

Product	Porosity
T-Gen	80.5% ± 6.08%
B product	65.7% ± 2.8%



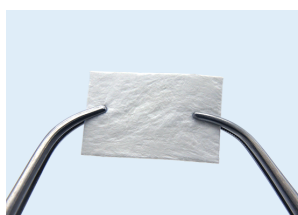
[The cross-section view]



[The plain view]

T-Gen has high porosity and specific surface area, which support excellent blood supply. This ensures optimal regeneration of bone and soft tissue.

Better Handling

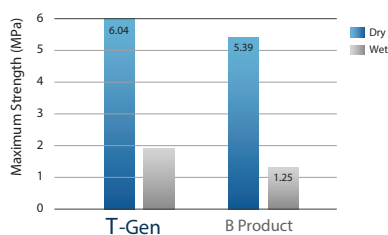


Before hydration



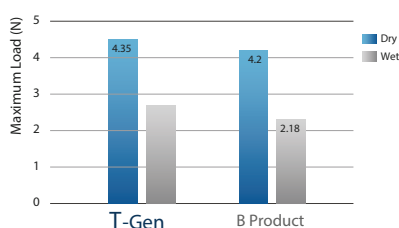
After hydration, excellent tensile strength

Tensile Strength Test



T-Gen has excellent tensile strength and thus, it can enable better handling properties for tear resistance in surgery than other products. In addition, T-Gen features excellent adaptation to surface contour due to fast hydration and excellent flexibility.

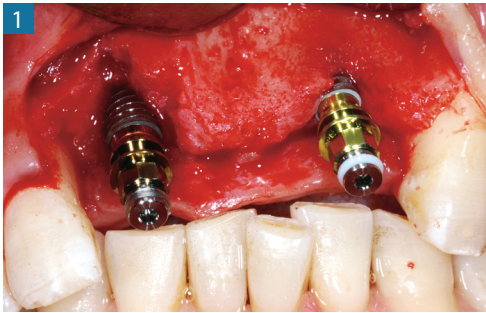
Suture Pullout Strength Test



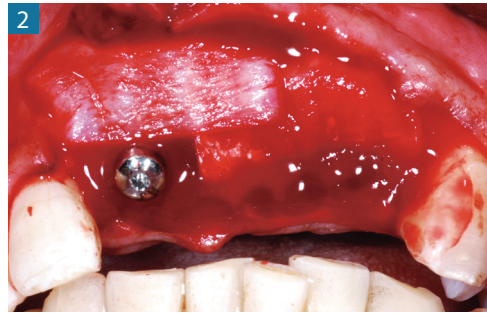
The suture pullout strength of T-Gen is higher than a comparable membrane due to its distinct structure. It enables enough mechanical strength and low risk of detachment.

//Clinical Cases Dehiscence Defect

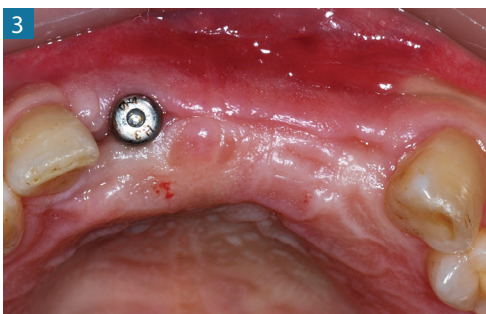
Case 1



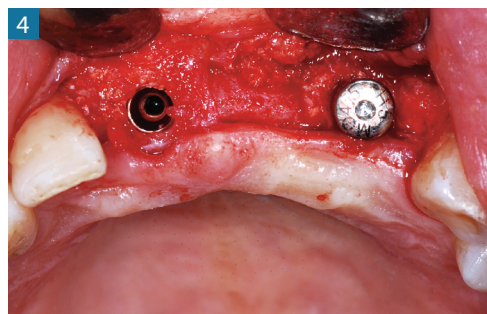
1 Large buccal dehiscence defect



2 Covering of the augmentation area with T-Gen

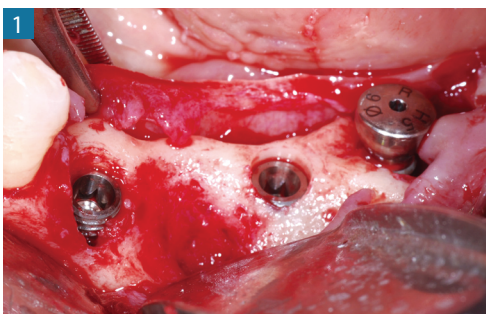


3 Satisfactory soft tissue formation

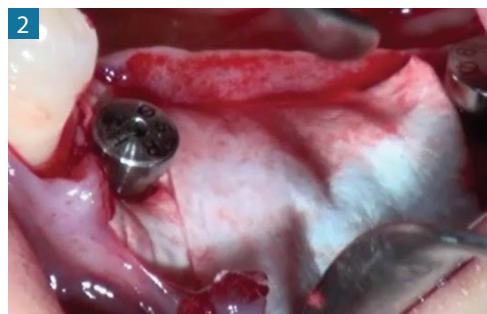


4 Excellent new bone formation after four months post-operatively

Case 2



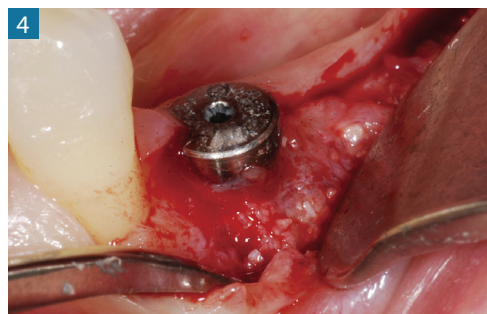
1 Buccal dehiscence defect



2 Covering of the augmentation area with T-Gen



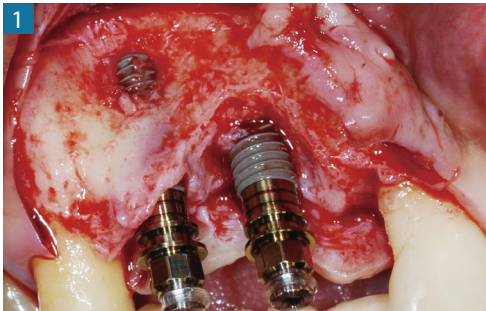
3 Stable healing of soft tissue



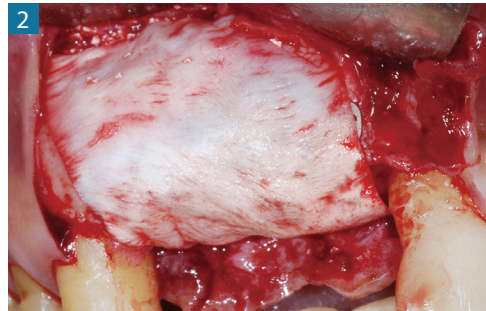
4 Satisfactory new bone formation without tissue ingrowth after three months

// Fenestration Defect

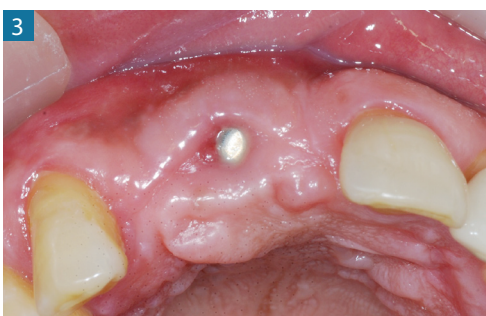
Case 1



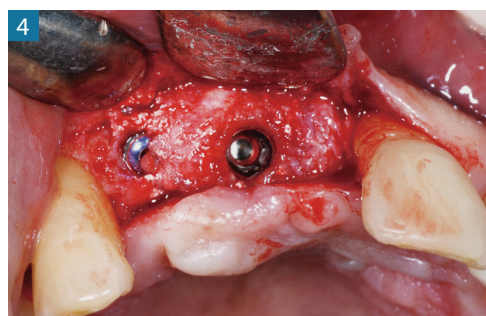
1 Large buccal dehiscence defect and fenestration



2 Complete covering of the augmentation area with T-Gen

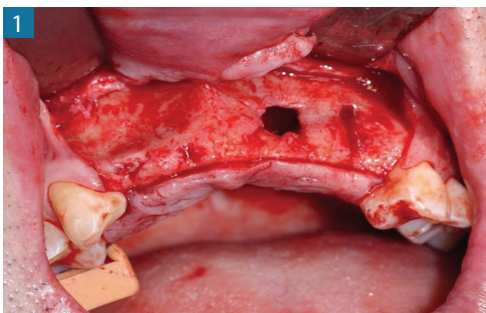


3 Stable healing of soft tissue

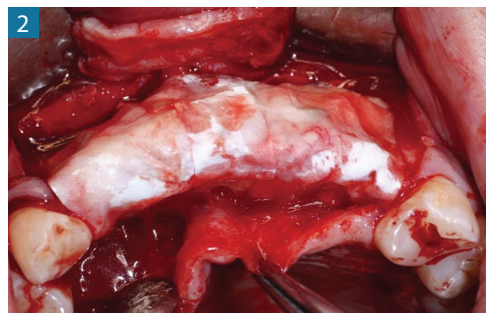


4 Excellent osseous integration showing after four months post-operatively

Case 2



1 Buccal bone fenestration



2 Complete covering of the augmentation area with T-Gen



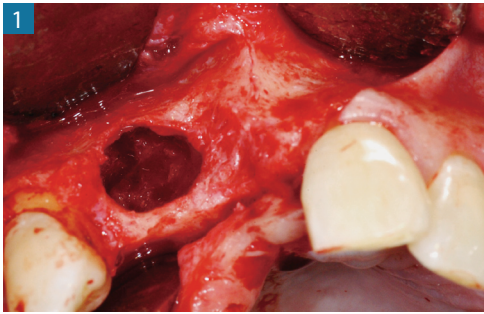
3 Satisfactory soft tissue healing



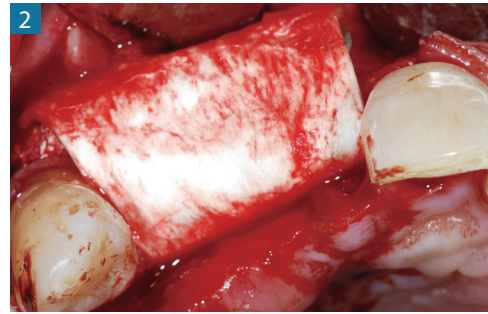
4 Perfect bony healing after four months

//Horizontal Augmentation

Case



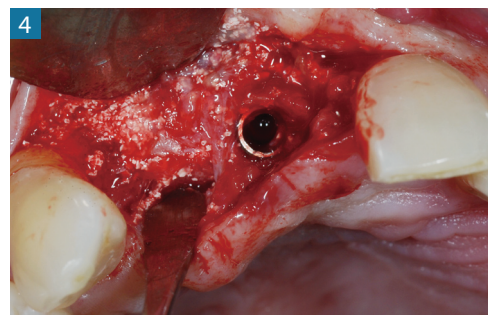
Horizontal bone defect



Complete covering of the augmentation area with T-Gen



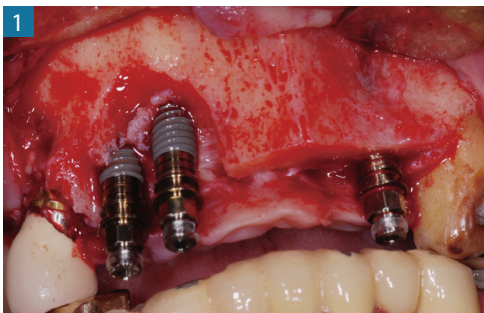
Satisfactory soft tissue formation with volume maintenance



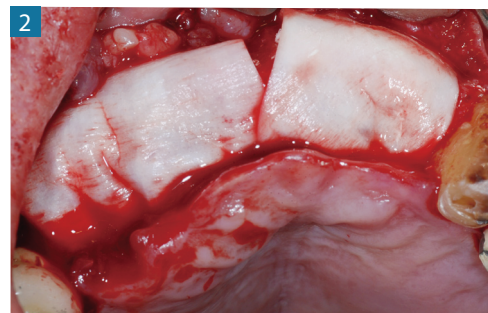
Excellent new bone formation in secondary surgery

//Ridge Reconstruction

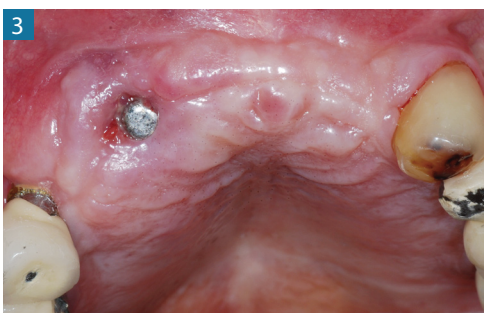
Case



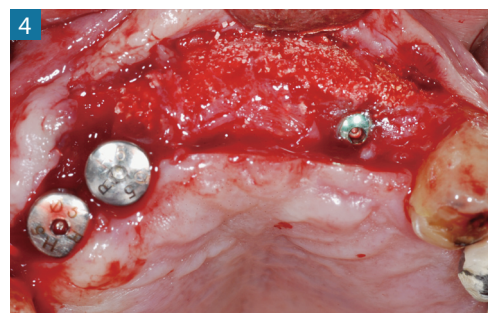
Large bone defect around immediate implant installation



Complete covering with T-Gen in the alveolar augmentation site



Stable soft tissue formation with volume maintenance



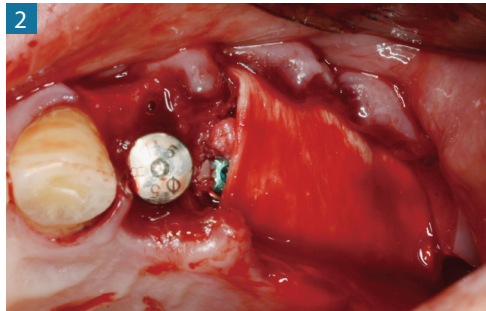
Excellent osseous integration showing after four months

//Ridge Preservation

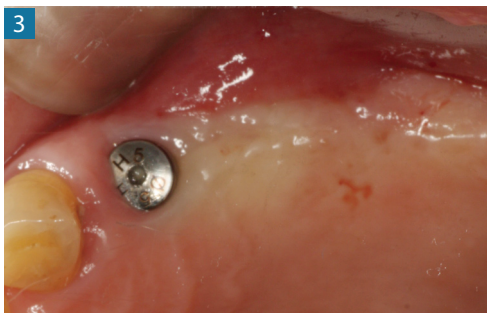
Case



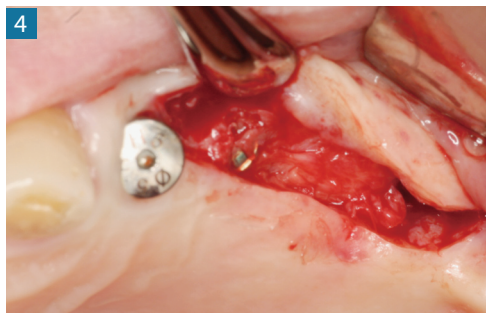
1 Bone defect showing around immediate implant insertion



2 Complete covering with T-Gen for ridge augmentation



3 Stable condition of soft tissue



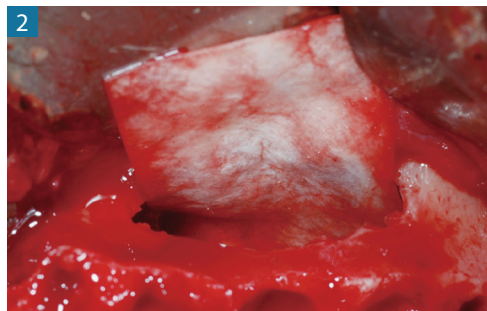
4 Perfect bone regeneration after four months post-operatively

//Sinus Perforation

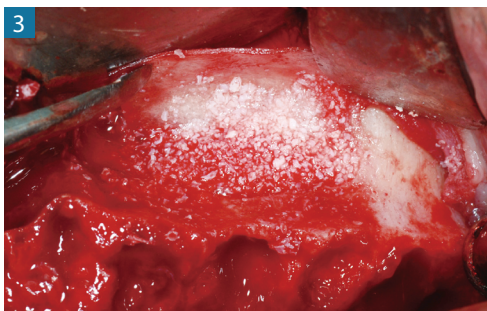
Case



1 Perforation in lateral site



2 Place T-Gen into the sinus cavity



3 Covering T-Gen in the augmentation site



4 Perfect soft tissue condition with stable volume maintenance after six months

//Ordering Information



Brand name	Model No.	Size
T-Gen	TG-1	15mm x 20mm
	TG-2	20mm x 30mm
	TG-3	30mm x 40mm



www.afratebava.com

Unit 151, 5th Floor, Ronica Palace
Commercial Office Park,
Ashrafi Esfahani Expy, Tehran
Tel: +98 21 1732