

# BeautiLink<sup>SA</sup>

The all-round luting solution



**PRG**  
Technology  
**Giomer**



## FOR LUTING PROSTHETIC RESTORATIONS



CAVITY / TOOTH STUMP / ABUTMENT / CORE BUILD-UP

\* For the adhesion of indirect restorations with low retentive surfaces (e.g. crowns, tabletop onlays) to the tooth structure, pretreatment of the cavity or abutment with BeautiBond Xtreme is recommended.

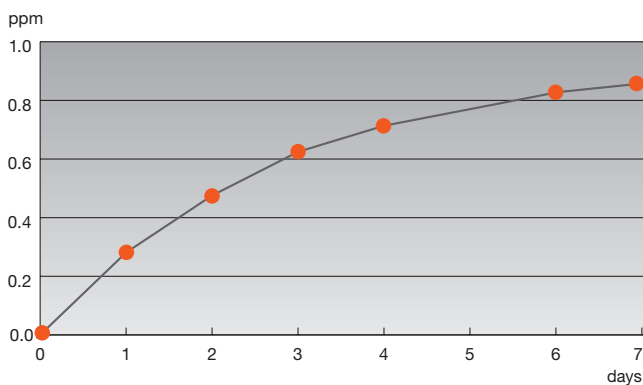
# Wide range of applications

BeautiLink SA is a universal, dual-cured, self-adhesive resin cement with ideal viscosity for easy handling, providing strong, stable and reliable adhesion to enamel, dentine, metals, ceramics (e.g. lithium disilicate), zirconia and indirect composite resins, with minimal technique sensitivity – and without the need for a pretreatment!

However, to enhance the adhesion of indirect restorations with low retentive surfaces to the tooth (recommended for crowns, tabletop onlays etc.), BeautiBond Xtreme can be used as a pretreatment in conjunction with BeautiLink SA.

Moreover, BeautiLink SA releases fluoride, thanks to SHOFU's proprietary S-PRG filler particles.

## Cumulative fluoride ion release



This resin cement is supplied in a dual-barrel syringe with auto-mixing tips, ensuring precise paste delivery without air inclusions, while clean-up is quick and easy. Three shades are available, providing highly aesthetic results no matter the situation, including a highly masking opaque shade.

## Highlights

- Excellent bonding to all ceramics including zirconia, metal and composite
- Opaque shade for high masking ability
- No primer required\*
- Fast and easy application
- Thin film thickness (14 µm)
- High radiopacity (1.9 mm Al)
- Excess material easily removed "in one piece" in a rubber-like consistency
- Storage at room temperature (1-25 °C)

## Indications

- Cementation of all-ceramic, composite and metal restorations
- Post cementation

## Reliable masking of discoloured tooth stumps and metal abutments



Model of metal abutment



Try-in without opaque cement – appears to be dark and somber



Luted with opaque cement – masks the abutment colour

# Remarkable adhesion and durability

The self-adhesive formulation of BeautiLink SA Paste A contains two acidic monomers (phosphonic acid and carboxylic acid monomers) which enable strong chemical adhesion to natural tooth structure, as well as to metal and zirconia surfaces. These functional monomers simplify the process of cementation regardless of the restorative material, and do not require the application of an additional primer.

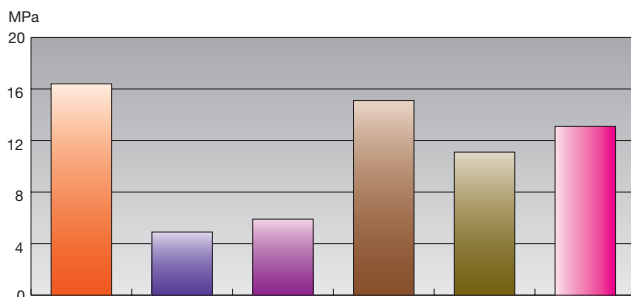
BeautiLink SA Paste B contains a new silane coupling agent to ensure reliable cementation to silane-based materials such as porcelain and lithium disilicate.

In addition, the new highly reactive catalyst system provides strong, immediate and reliable adhesion; it also improves the long-term stability, allowing BeautiLink SA to be stored at room temperature of 1-25 °C. This gives BeautiLink SA superior mechanical properties, ensuring high resistance to occlusal stress for long-lasting restorations.

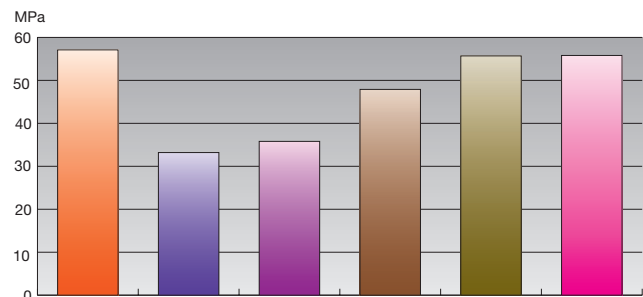
## High and reliable bonding strength

In an internal comparative shear bond test using the notched-edge method based on ISO 16506, BeautiLink SA, as shown in the following graphs, achieves higher bond strength to dentine and, in particular, to zirconia, as well as strong results on lithium disilicate in *dual-cure mode after 5,000 thermocycles*, without the application of an additional primer.

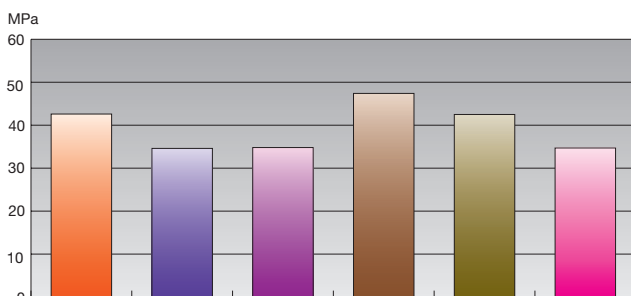
### Bond strength to dentine



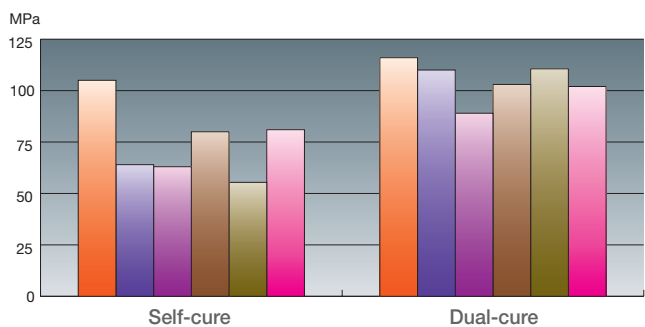
### Bond strength to zirconia



### Bond strength to lithium disilicate



### Flexural strength



#### Bond strength test method:

Once the specimens of the selected dental restorative materials were cleaned, zirconia rod (ø 4.0 mm) was cemented on the treated specimen surface with BeautiLink SA or selected competitor's self-adhesive resin cements according to manufacturer's instructions by dual-cure mode. Notched-edge shear bond strength was measured in both after 24 h immersion in 37 °C water and after aging (thermocycling 5,000 cycles).



# Specifically designed for zirconia restorations

In recent years, high-translucent zirconia has been developed and clinically used as an indirect restorative material for inlay, onlay or laminate veneer restorations. Zirconia has become the preferred material for dental crowns due to its unique properties (exceptional strength, durability, biocompatibility and natural aesthetics), making it the ideal choice for both anterior and posterior restorations.

## Clinical case study: Aesthetic improvements for vital and discoloured non-vital maxillary incisors using high-translucent zirconia veneers

A 43-year-old female patient presented to the Esthetic Dentistry Department of Aichi Gakuin University Dental Clinic complaining of fractures and discolouration of her veneer restorations on the two upper central incisors, which had been cemented about 20 years ago.

A high aesthetic solution to the anterior situation was achieved by restoring the teeth with new veneers made of high-translucent zirconia (SHOFU DISK ZR Lucent Supra), luted with BeautiLink SA.



1 Veneer preparation



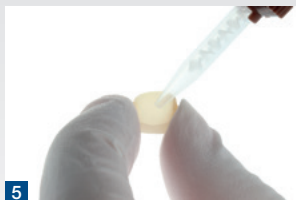
2 Temporary restoration



3 Phosphoric acid etching



4 Applying BeautiBond Xtreme



5 Applying BeautiLink SA to the prepared veneer



6 Seating of the veneers



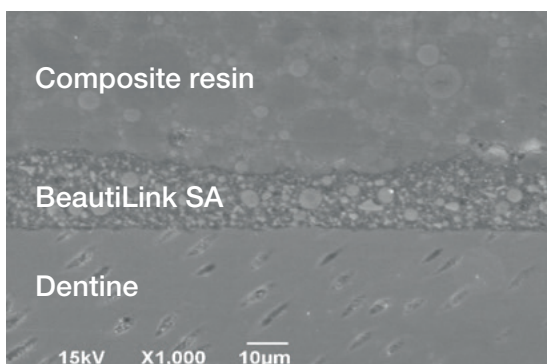
7 Removing excess cement



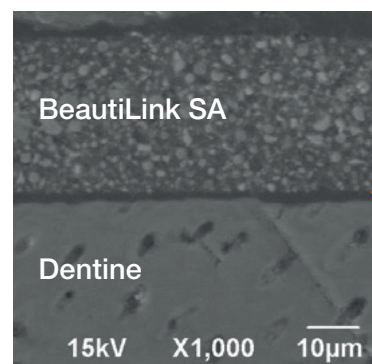
8 Final situation in situ

Prof. Akimasa Tsujimoto, Dept. of Operative Dentistry,  
Aichi Gakuin University School of Dentistry, Japan

## Thin film thickness for virtually invisible margins



SEM of the cross-sectional specimen, with composite resin cemented onto bovine dentine, revealed a minimum film thickness of BeautiLink SA of approximately 14 µm.

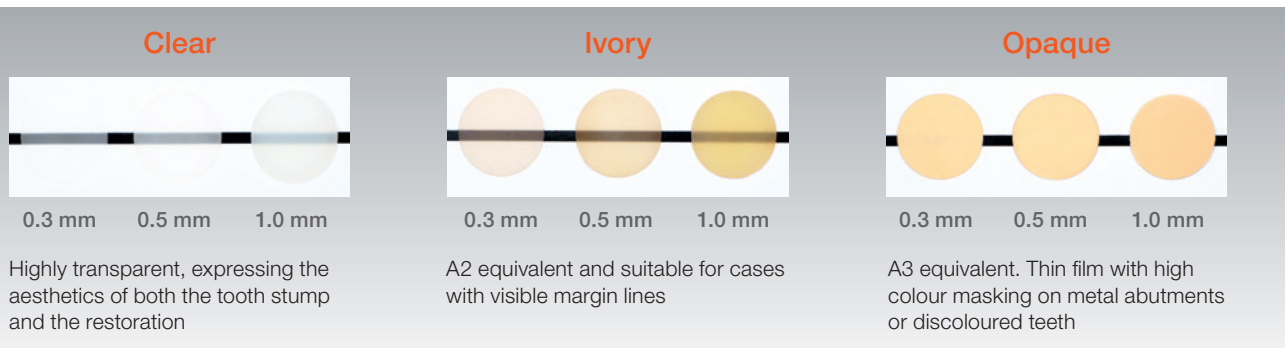


BeautiBond Xtreme has a minimum film thickness due to its ease of spreadability



## Shade selection

BeutiLink SA is available in 3 shades: Clear and Ivory are highly translucent, while the Opaque shade is excellent for masking stains and darker preps.



## Order information



Automix syringe, 5 ml, with 10 mixing tips

Clear REF CE0203

Ivory REF CE0204

Opaque REF CE0205



2 Automix syringes, 5 ml each, with 20 mixing tips

Clear REF CE0215

Ivory REF CE0216

Opaque REF CE0217

## Related products



BeutiBond Xtreme

Universal all-in-one adhesive

**Set:** Bottle, 5 ml

Disposable Brush Fine, 50 pcs.

Shofu V-Dish, 25 pcs.

REF YE2448



**SHOFU INC.** 11 Kamitakamatsu-cho, Fukuine, Higashiyama-ku, Kyoto 605-0983, Japan

EC REP **SHOFU DENTAL GmbH** An der Pönt 70, 40885 Ratingen, Germany, [www.shofu.de](http://www.shofu.de)

SHOFU is a registered trademark of SHOFU INC. All other trademarks and registered trademarks are the property of their respective holders. SHOFU INC. reserves the right to change specifications without notice.