

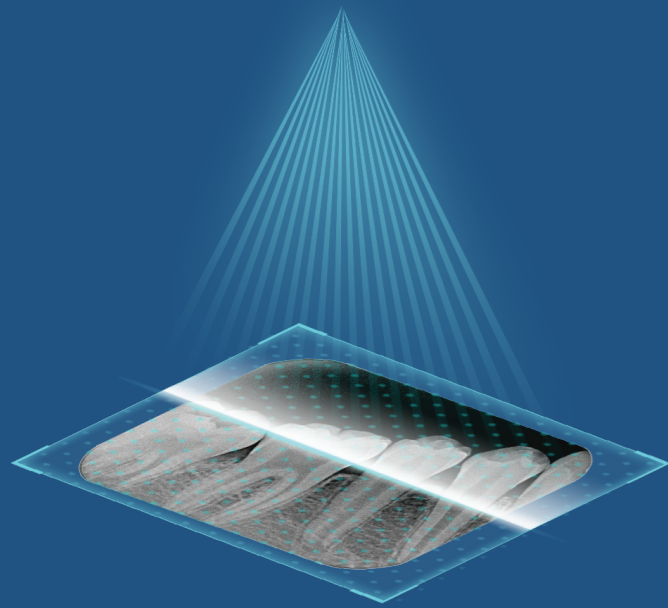


Innovative Technology of Image Integration

SP-dot Matrix Super Pulse Laser Lattice Scanning



SP-dot Matrix image processing technology is used to improve efficiency of image generation. Image with high grayscale value can be generated within seconds.



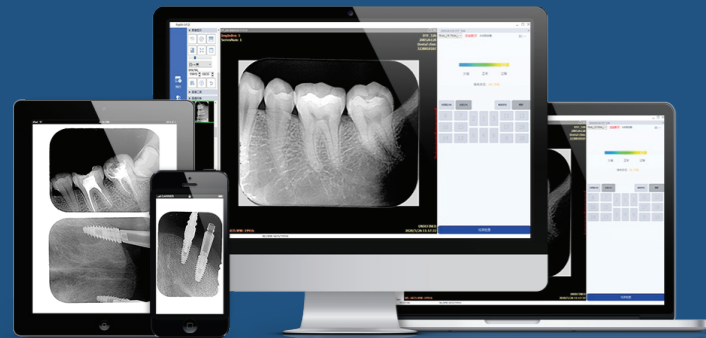
U-ACE Imaging Technology

After optimizing ACE algorithm, we get the U-ACE version. Combining with SP-dot Matrix technology, we are able to get exquisite and clear images.



Innovative Technology of Image Integration
 SP-dot Matrix U-ACE
 Initiate smart interaction
 Free communication

Display on Multiple Devices



Standby

Reading

Finish

☎ 021-26654118 021-26654108

📍 @Lotusmedco
 🌐 lotusmedco.com

📞 09017514280

SMART

Digital Dental Image Plate Scanner

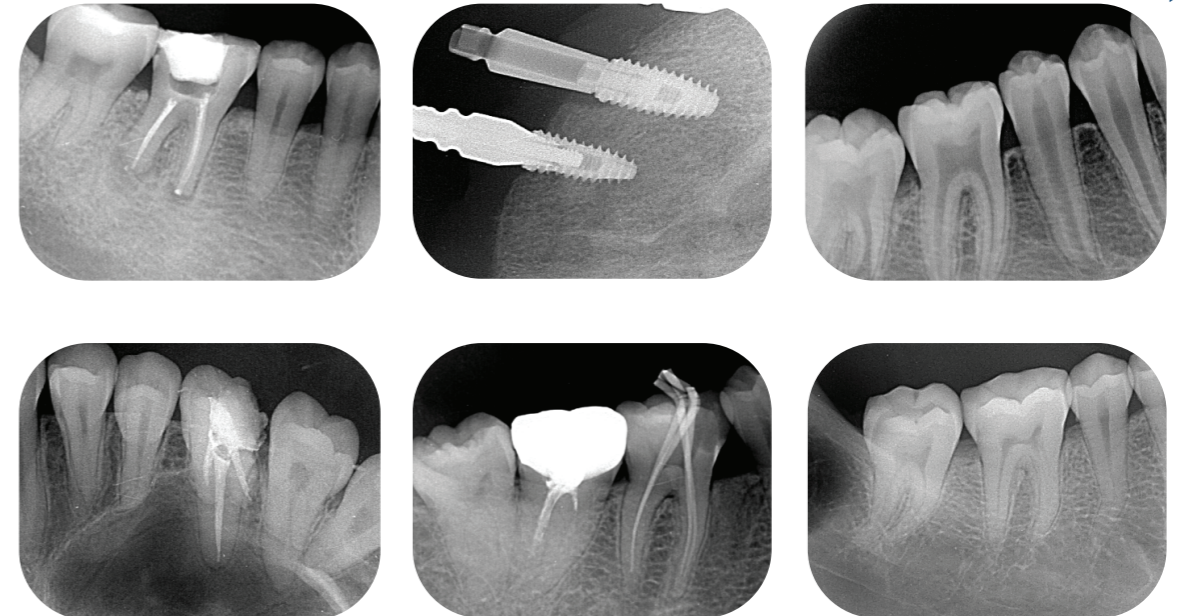
Smart interaction, easy work



- The status of the scanner, standby finish, is showed by different color of light, reading, smart and direct way to know what the scanner is doing.

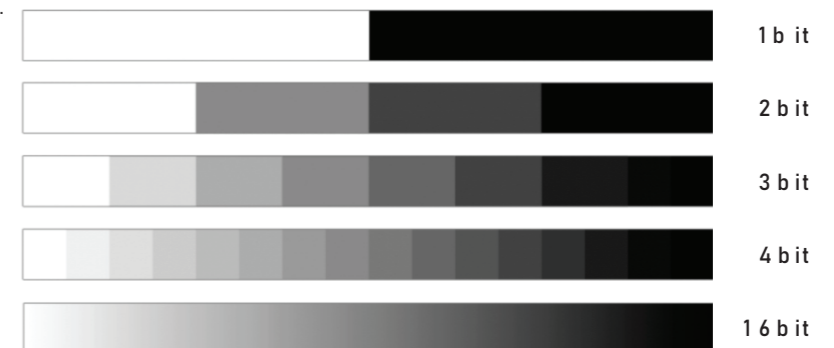


Image Samples



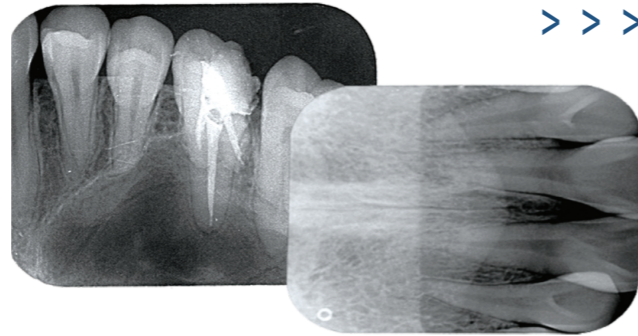
Super Clear Dental Image

Greyscale indicates the lightness level of image. It is the value of black and white or lightness at each pixel. From black to white, there are many grayscale values. The more the grayscale values, the more vivid and clear the image.



Ultimate image, every small lesion can be easily seen.

- Thanks to high resolution and high grayscale value image, every small lesion can be shown in detail.
- The digital image has 16bit grey scale and 14lp/mm resolution. With the help of image processing algorithm, the final image is clear and readable. No further adjustment needed.



As thin as 0.1mm, guaranteed comfort for patient when scanning.

- Thin and soft plate can fit patient's teeth better. The image is clearer and has less distortion.
- The phosphorescent plate can be used for more than 1000 times. A storage box is available to protect the phosphorescent plate well.
- The phosphorescent plate has 4 sizes, 0# (22x31mm), 1# (24x40mm), 2# (31x41mm), 3# (27x54mm). They can be used to all patients.

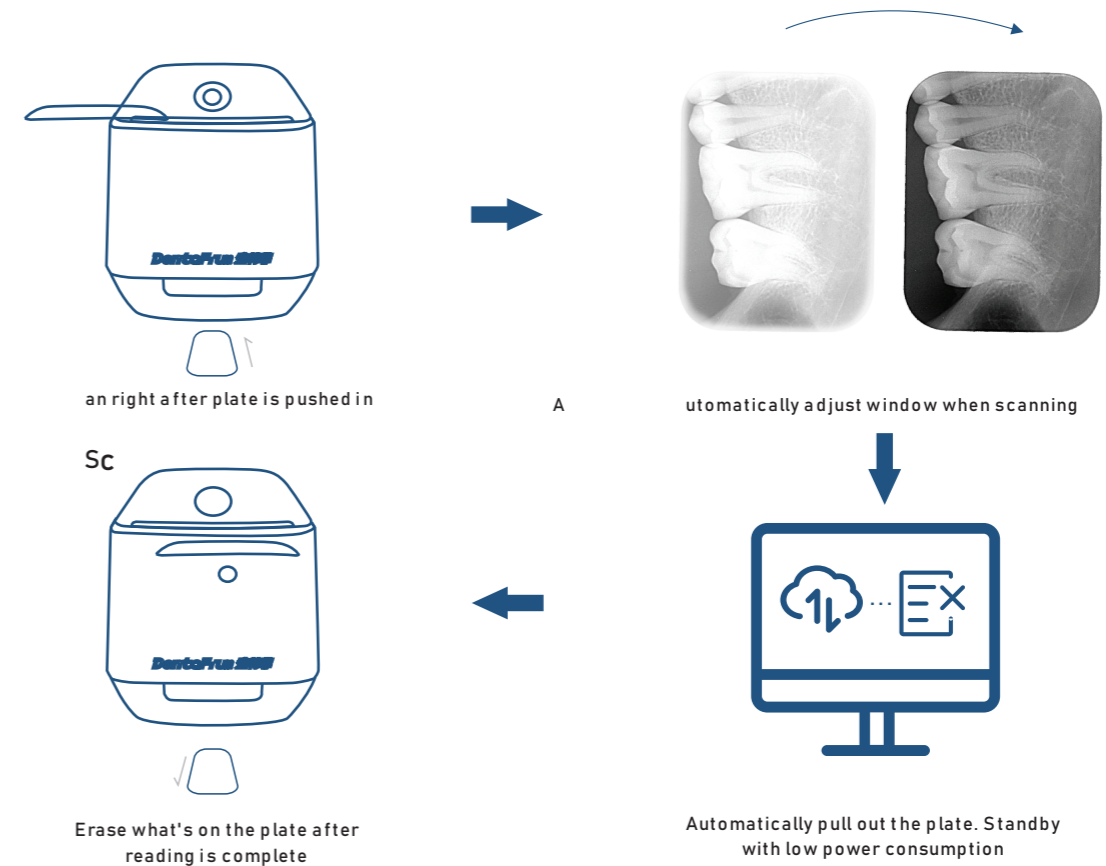


Technical Parameters

Plate size supported	0#, 1#, 2#, 3#
Resolution	14lp/mm
Pixel size	35um
Greyscale value	16bit
Imaging plate erase	auto
Communication interface	USB
Power supply	AC 220V 50Hz (changeable)
Dimensions	296mmX170mmX196mm
Operating system	Microsoft Windows 7 or above
Data printing	office printer or DICOM printer
Image output format	DICOM, BMP and JPG

Smart Phosphorescent Plate Processing System

- Smart scan: automatically start scanning and reading after the plate is pushed in. When finished, the plate is pulled out.
- Image optimization: automatically adjust the size and position of window to get best image display.
- Smart erase: when finished reading, the system will automatically erase the image on plate. Convenient to use again.
- Saving power: in standby mode, the scanner will switch to power saving mode.



Relative Advantages

Compared to digital sensor	Compared to traditional film
Imaging plate is thin and soft. Each to be placed	No need for dark room. More convenient
100% effective imaging area. More details in image	No harmful chemicals. Safe and eco-friendly
Different plate sizes for all needs	Exposure of image adjustable on software
No cables, better fit in patient's mouth	Digital image, instant use
Running cost is lower. Economic	Digital diagnosis and storage